

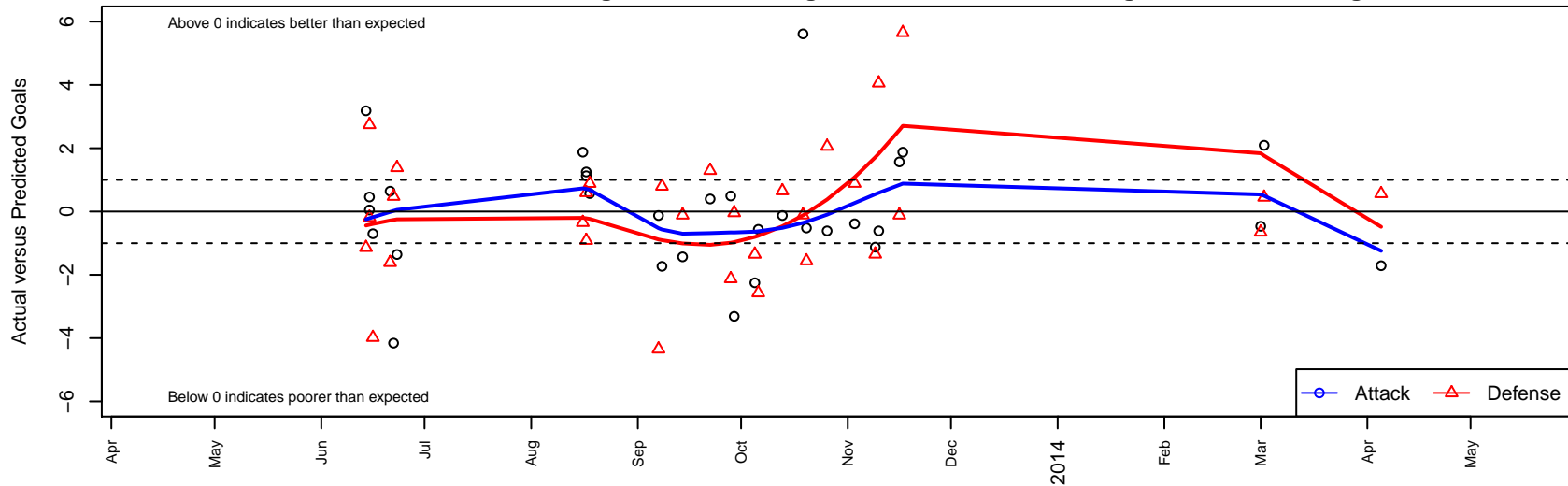
SESC Celtic B01

Southeast SC
 Portland, OR
 B01 total strength=664
 attack=1.15 defense=0.34
 fall league = OPL First Division U12, OPL Direc
 alt names used:
 PCU SESC Celtic
 SESC Celtic
 Southeast Soccer Club SESC Celtic

Venues played:
 United Cup U12
 Cascadia Challenge Silver U12
 Mt Hood Challenge BU12 Silver 2
 OPL First Division U12
 OPL Directors Cup Gold U12
 Spr OPL Mt. Jefferson Division U12



SESC Celtic B01
 Dots are actual minus expected GF (blue circles) and GA (red triangles).
 Blue line is smoothed change in attack strength. Red is smoothed change in defense strength.



| | date | home | | away | | venue | pred.home | pred.away |
|-------|------------|-----------------------------------|----|--------------------------------|----|------------------------------------|-----------|-----------|
| 25656 | 2014-04-05 | FC Portland White B01 | 1 | SESC Celtic B01 | 4 | Spr OPL Mt. Jefferson Division U12 | 1.6 | 5.71 |
| 23690 | 2014-03-02 | SESC Celtic B01 | 5 | NEU Lazio Blue B01 | 1 | Spr OPL Mt. Jefferson Division U12 | 2.9 | 1.45 |
| 23446 | 2014-03-01 | TFA Barcelona OR B01 | 3 | SESC Celtic B01 | 3 | Spr OPL Mt. Jefferson Division U12 | 2.3 | 3.47 |
| 18739 | 2013-11-17 | Pacific FC Cobras B01 | 0 | SESC Celtic B01 | 4 | OPL Directors Cup Gold U12 | 5.7 | 2.13 |
| 18427 | 2013-11-16 | Thelo Cosmos B01 | 2 | SESC Celtic B01 | 5 | OPL Directors Cup Gold U12 | 1.9 | 3.43 |
| 18037 | 2013-11-10 | WUSC Arsenal White B01 | 0 | SESC Celtic B01 | 1 | OPL Directors Cup Gold U12 | 4.1 | 1.61 |
| 17686 | 2013-11-09 | Pacific FC Cobras B01 | 7 | SESC Celtic B01 | 1 | OPL Directors Cup Gold U12 | 5.7 | 2.13 |
| 17189 | 2013-11-03 | SESC Celtic B01 | 4 | PCU Red B01 | 2 | OPL Directors Cup Gold U12 | 4.4 | 2.89 |
| 15805 | 2013-10-26 | WUSC Arsenal White B01 | 2 | SESC Celtic B01 | 1 | OPL First Division U12 | 4.1 | 1.61 |
| 15280 | 2013-10-20 | SESC Celtic B01 | 2 | United SA Gladiators B01 | 5 | OPL First Division U12 | 2.5 | 3.44 |
| 14887 | 2013-10-19 | PCU Red B01 | 3 | SESC Celtic B01 | 10 | OPL First Division U12 | 2.9 | 4.39 |
| 14311 | 2013-10-13 | SESC Celtic B01 | 2 | Pacific FC Cobras B01 | 5 | OPL First Division U12 | 2.1 | 5.65 |
| 13263 | 2013-10-06 | SESC Celtic B01 | 1 | Pacific FC Blue B01 | 6 | OPL First Division U12 | 1.6 | 3.43 |
| 12809 | 2013-10-05 | ETFC Valencia Black -was Blue B01 | 4 | SESC Celtic B01 | 1 | OPL First Division U12 | 2.6 | 3.25 |
| 12308 | 2013-09-29 | SESC Celtic B01 | 1 | Corvallis United Reign B01 | 2 | OPL First Division U12 | 4.3 | 1.96 |
| 11863 | 2013-09-28 | FC Portland Navy B01 | 5 | SESC Celtic B01 | 2 | OPL First Division U12 | 2.9 | 1.51 |
| 11369 | 2013-09-22 | SESC Celtic B01 | 2 | Washington Timbers Forrest B01 | 3 | OPL First Division U12 | 1.6 | 4.30 |
| 9946 | 2013-09-14 | Thelo Cosmos B01 | 2 | SESC Celtic B01 | 2 | OPL First Division U12 | 1.9 | 3.43 |
| 9443 | 2013-09-08 | SESC Celtic B01 | 2 | RVSC Timbers Red B01 | 1 | OPL First Division U12 | 3.7 | 1.80 |
| 8999 | 2013-09-07 | Pacific FC Cobras B01 | 10 | SESC Celtic B01 | 2 | OPL First Division U12 | 5.7 | 2.13 |
| 7419 | 2013-08-18 | SESC Celtic B01 | 4 | Thelo Cosmos B01 | 1 | Mt Hood Challenge BU12 Silver 2 | 3.4 | 1.89 |
| 7029 | 2013-08-17 | SESC Celtic B01 | 9 | Bend FC Timbers White B01 | 1 | Mt Hood Challenge BU12 Silver 2 | 7.9 | 1.60 |
| 7050 | 2013-08-17 | SESC Celtic B01 | 4 | RVSC Timbers White B01 | 3 | Mt Hood Challenge BU12 Silver 2 | 2.8 | 2.09 |
| 6785 | 2013-08-16 | Pacific FC Cobras B01 | 6 | SESC Celtic B01 | 4 | Mt Hood Challenge BU12 Silver 2 | 5.7 | 2.13 |
| 1955 | 2013-06-23 | Eastside Timbers White B01 | 1 | SESC Celtic B01 | 1 | Cascadia Challenge Silver U12 | 2.4 | 2.36 |
| 1774 | 2013-06-22 | SESC Celtic B01 | 7 | Westside Timbers Mundial B01 | 0 | Cascadia Challenge Silver U12 | 11.2 | 0.48 |
| 1648 | 2013-06-21 | Eastside Timbers White B01 | 4 | SESC Celtic B01 | 3 | Cascadia Challenge Silver U12 | 2.4 | 2.36 |
| 1367 | 2013-06-16 | THUSC Uranium B01 | 5 | SESC Celtic B01 | 5 | United Cup U12 | 1.0 | 5.70 |

| | date | home | | away | | venue | pred.home | pred.away |
|------|-------------|--------------------|---|-----------------------------|---|----------------|------------------|------------------|
| 1136 | 2013-06-15 | SESC Celtic B01 | 2 | OSA Cosmos B01 | 5 | United Cup U12 | 1.5 | 4.82 |
| 1138 | 2013-06-15 | THUSC Titanium B01 | 2 | SESC Celtic B01 | 1 | United Cup U12 | 4.7 | 0.95 |
| 943 | 2013-06-14 | SESC Celtic B01 | 5 | Lake Oswego SC Flamengo B01 | 6 | United Cup U12 | 1.8 | 4.86 |